



TOR MAM

Mammography Phantom

A test object designed to be used quickly and easily on a routine basis to provide an ongoing check of imaging performance, particularly those aspects which are most liable to deterioration. An ongoing record of these numbers will reveal any trend towards deterioration in imaging performance.

This test object is supplementary to TOR MAS or MAX and provides a more "natural" image which may be preferred by radiographers and radiologists. The top (left) half contains a range of filaments, micro-particles and low-contrast details, representing pathological features in the breast. These are sensitive to the mammographic grey-scale, noise and unsharpness, and can be used to obtain an image-quality "score". The lower (right) half simulates the appearance of breast tissue and contains micro-calcification in addition to fibrous and nodular details.

TOR MAM Comprises:

- Standard PMMA test block
(6 pieces 10.0±10%mm thick pmma
240mm diameter semi-circle
2 pieces 5.0±10%mm thick pmma
240mm diameter semi-circle)
- Filaments
(6 groups of multi-directional filaments)
- Micro-calcifications
(6 groups of micro-calcifications in
ranges of 354-224, 283-180, 226-150,
177-106, 141-90, 106-93)
- Threshold Contrast Details
(6 groups of 3, low contrast details
groups)
- Clinically Realistic Breast Tissue
(6 groups of micro-calcifications (as in
the above) with a clinically realistic
breast tissue feature)





TOR MAM

Mammography

Product Detail

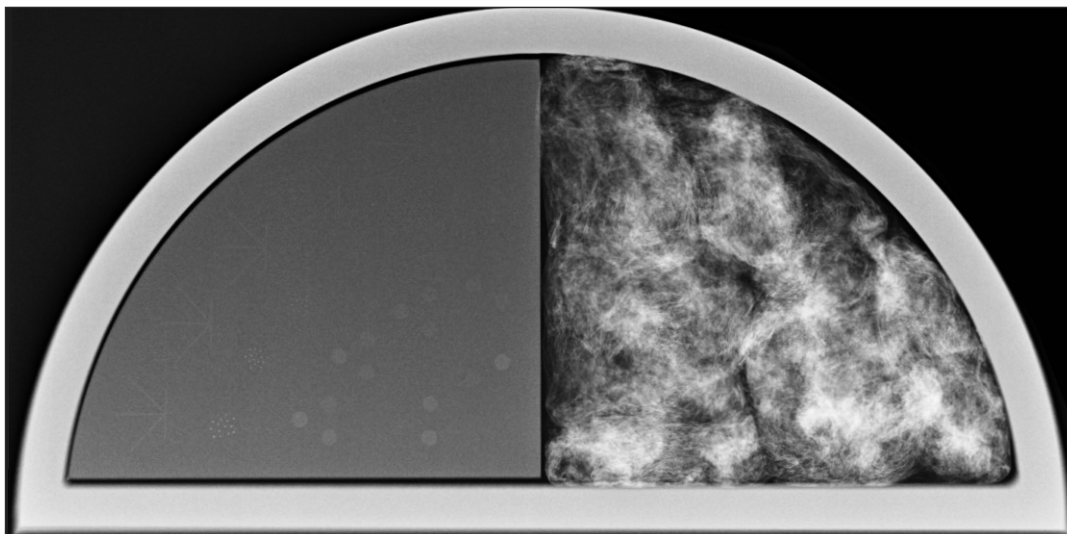


fig. 1 TOR MAM X-ray image

Accessories



PIXMAM - a full-field 300x240mm fine-tolerance PMMA stack, including one plate with an embedded Al foil.

深圳市展业达鸿科技有限公司

吕先生: 15920060912 (微信同号) 0755-22934005 (座机)

地址: 深圳市福田区八卦二路八卦岭工业区615栋419

邮箱: hongqi@thingstet.com

网址: www.thingstet.com